

## THE EARLY CANCER CONNECTION



In 1979 an American researcher Nancy Wertheimer, during her research into childhood Leukemia, first identified the possibility of a link between power-line transformers & cancer. Nancy was investigating the hypothesis that the answer to childhood cancers laid in conventional infectious factors.

However, examination of her data eventually led her to the conclusion that children living in houses either side of poles with step down transformers showed the highest incidence of the disease. The field strength drops sharply immediately beyond the second house from the transformer, in direct relation to the magnetic field generated by them.

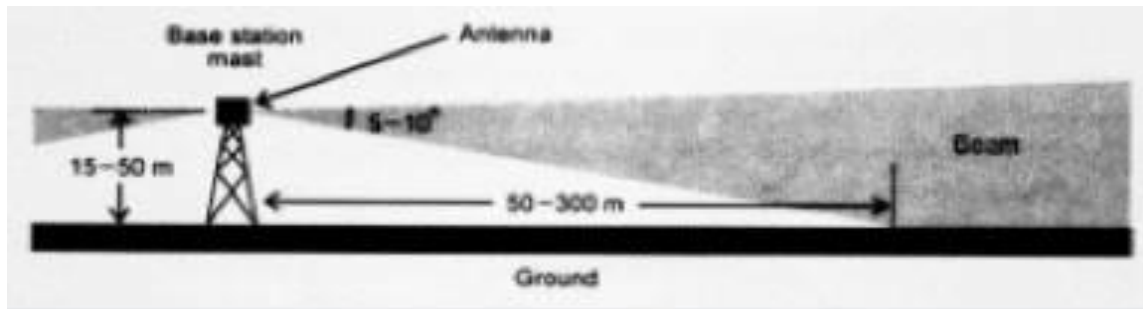
Wertheimer, together with another researcher called Ed Leeper, did further detailed analysis of the results & more epidemiological studies, which supported the previous study.

Studies done by Robert O Becker MD, U.S.A. & Dr Tomenius in Sweden, have supported Wertheimer's findings.

Unfortunately the majority of the medical profession & the electric power supply companies have refused to admit that EMFs could produce carcinogenic conditions & have rejected the research. There has been 2 court cases in America & Australia, leading to very expensive re-routing of power lines that were built near schools & residential housing.



In England there have been several damage claims.



## Radio & Mobile Phone Towers

In the 1950s one of the first commercial radio transmitters was placed on the roof of the Empire State Building, New York. The maintenance crew in charge of the installation discovered one of the properties of strong radio transmissions is cooking. If they put a sausage on a stick & placed it in front of a transmitter dish it would cook. (This is one of the principles behind microwave ovens; working with high frequency oscillations causes the water molecules in the food to vibrate rapidly the resulting friction causing heat). Unfortunately the maintenance crew used the heating effect to warm themselves on cold nights by standing in front of the dishes. It all turned sour when years later, most of the crew developed a variety of cancers. Now it's recognised that exposure to radio or microwave radiation is potentially very dangerous.

The Telecommunications Act of 1994, Vic., was the size of the Sunshine Coast phone book. At the time it was being debated, most people, including many legislators voting on it, thought it was only about complex deregulation schemes. But deep within its pages, in Section 8.5.1, lay a stealth clause about the siting of mobile-phone towers, creating a planning & zoning nightmare & according to some scientists & journalists a huge public health problem.

**The Telecommunications National Code gives the mobile phone companies immunity from most state laws.**

The exemption of Australia's 3 telecommunication companies from any zoning laws has officials today caught between a rock & a hard place when it comes to placing mobile-phone towers or other antenna installations. Legally the telecommunications companies can't be refused, even with zoning regulations based on health effects. No matter how convincing the scientific evidence or how militant the community becomes.

Any community that tries to challenge the safety of mobile phone towers based on the 'environmental' effects of radio-frequency (RF) emissions can end up in court. Several communities have tried already.

The reason given for this legislation was; " the Australian public would 'go berserk with rage' if state laws prevented the delivery of an efficient & effective telecommunications system".

## Sydney Suburbs

Dr Bruce Hocking (medical adviser for Telstra) conducted a health study in a 4km zone in a Sydney suburb surrounded by 3 mobile phone towers & 2 TV transmission towers. Although mobile phone & TV transmissions are different, they are closely related on the EMR spectrum. Both these transmissions are 1,000 times lower than the present 'Australian standards'.

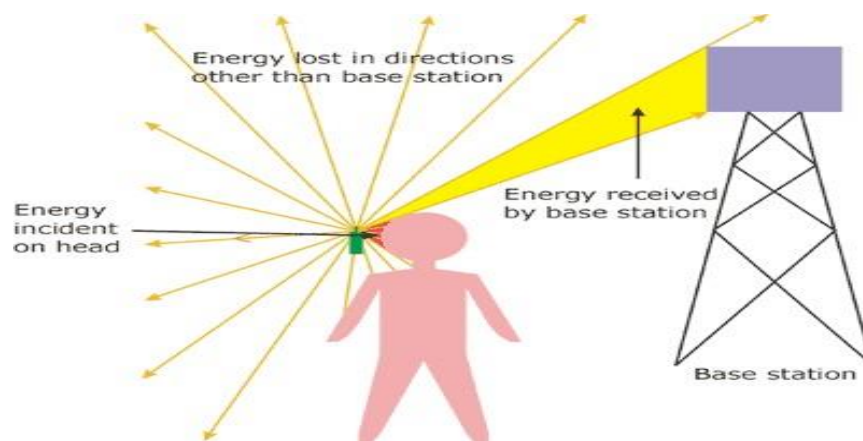
Dr. Hocking's findings showed children living within a 4 km radius of these had a 60% higher incidence of Leukaemia than children who lived further from the towers; also there was a far greater risk of dying from the disease. Dr. Hocking also found a slightly increased rate of adult cancer in the study area than beyond it (Dr Hocking lost his position over these findings).

### An English School

In September 2004 the attention of the Royal Society of Medicine, London, was directed to a primary school on the south coast of England. During June 2004, 11 children in various classrooms suddenly & simultaneously developed nosebleeds & nausea for no apparent reason. It was 2 weeks before the school discovered a mobile-phone tower that had been erected 4 weeks earlier (750 mtr away) had been switched on that particular morning. It was evident the radiation being transmitted had caused the physical reaction in the children.

Living near mobile phone towers or TV transmission towers also causes biological stresses in the body.

As energy moves through the environment it absorbs the vibrations of the things it encounters.





## Mobile Phone Tower Radiation can Kill

December 2006

**"HUNDREDS of people, from the very young to the elderly, living in & around mobile phone towers are unknowingly living with death as both local & international medical research indicate radiation from these towers may cause major diseases, sometimes with fatal consequences."** NEWSDAY REPORTERS



This was the view expressed by several professors, researchers & public health scientists during a health symposium 3/12/06 at the University of the West Indies (UWI) Faculty of Medical Sciences, Eric Williams Medical Sciences Complex, in Mt Hope. The symposium entitled **"Cell Tower Radiation: Is it safe?"** saw a disappointing turnout especially since the health concern surrounding mobile phone towers was raised locally & internationally within recent time. Members of the panel found that brain tumors, memory loss, a reduced sperm count & leukemia were some of the effects caused by constant exposure to

mobile phone tower radiation. Noticeably absent from yesterday's symposium were representatives of the country's two cellular providers — TSTT & Digicel. Symposium chairman Keith Clifford noted the absence. Peter Permell, vice-president of the Association for Radio Frequency (RF) Emission & Control in TT (ArFECTT), told the audience that mobile phone tower radiation is one of the most important environmental concerns today. According to Permell, ArFECTT undertook its own research into RF emissions because the group "Is deeply concerned about the public's safety. The association," he said, "also found that the symptoms subside when people leave the surrounding area where these towers are located." Mobile phone towers are erected in or around densely populated areas to ensure the viability of radio frequencies on which mobile phones operate. It was added that the towers should not be placed closer than 300 metres to where people live. Professor Stephan Gift, of UWI's Faculty of Engineering, said his findings showed, "Radiation caused alteration in brain waves, a two-fold increase in child leukemia & changes in the human immune system." He also sourced information from a **"Reflex Study"** done by 12 groups in seven European countries. Findings showed that radiation caused DNA breaks in exposed cells of the human body. Gift said "It was also found that in Germany, this year, there was a seven-fold increase in breast cancer in an area with mobile phone towers."





## Mobile Phone Tower Radiation can Kill

December 2006

Professor Gift also said " **900 mobile phone towers were demolished in Taiwan in 2005 after these health concerns were raised.**" Throughout the local phone-tower issue, TSTT has maintained it ensures its radio frequency emissions from phone-towers were as much as a 1,000 times lower than the recommended levels of the International Commission on Non-Ionizing Radiation Protection (ICNIRP).

However, Gift suggested that the Telecommunications Authority of Trinidad & Tobago (TATT) reject the ICNIRP as have China, Russia & Sweden & move to a better standard when dealing with the health ramifications of these towers. Gift said "The headaches people experience with prolonged mobile



phone usage are because, things leak into the brain, which shouldn't." TATT executive chairman John Prince said. "We have not had all of the information (regarding the amount of phone-towers in TATT)...the companies (TSTT & Digicel) are supposed to lodge with us,". TSTT Communications Manager Amoy Van Lowe maintains mobile-tower emissions are significantly lower than international standards. She added that instead of criticising the company, Professor Gift should, "Lobby to have the standards re-assessed."

The symposium also included a recording from George Carlo, a Public Health Scientist at the Science & Public Policy Institute in the United States on his findings regarding mobile-tower radiation emissions. George Carlo said "Over a period of five & a half years, severe effects from mobile phone usage were discovered. Radiation from mobile phones opened up the blood-brain barrier that normally protects brain tissues from toxic chemicals circulating in the blood & also caused a disruption in DNA repair." However, Jonas Addae, a professor at UWI's Faculty of Medical Sciences, disputed the panel's findings saying that in the year 2000, the World Health Organisation (WHO) indicated that "Radioactive frequencies emitted by mobile phones & base stations are unlikely to induce or promote cancer."

In July, Planning & Development Minister Camille Robinson-Regis indicated that Government, with the help of the Army, was going to tear down 16 TSTT & Digicel phone-towers, which reportedly failed to comply with existing planning policy. So far, only one phone-tower has in fact been torn down. Attempts to contact both Robinson-Regis & Public Utilities & the Environment Minister Penelope Beckles, for comment proved futile."

## 4. LEY LINES



The entire earth is threaded with an invisible grid called Ley-lines.

Along with underground water, Ley-lines are found at most ancient monuments & sacred places. The honour of rediscovering the Ley-line system in 1921 belongs to Alfred Watkins. His basic theory (although flawed) was that the sites of ancient monuments are aligned on connected Ley-lines, & as many ancient sites found in England are actually on connecting Ley-lines it seemed a credible conclusion. The shortcoming of this is that many people/dowsers have assumed that because a number of sites are aligned, they are all on connected Ley-lines. This simply is not true.



The Ley-line system exists as an independent circuitry with the capacity to affect consciousness. Ley-lines are part of the Earth's energy system.

Ancient roads & monuments were built on ley-lines, which made these sites energetically special. Many of us realise the ancient civilizations knew much more than our present scientific generation.



The word Ley, is akin to light & the Middle English word 'Lea' meaning "pasture land, a meadow which is open to the sun & therefore, often drenched with light." This connection of the word Ley with light is significant on

several levels. Physically, the clearing of tracks through the forest lights the way & marks the "ley of the land." This describes a sort of cosmic roadway upon which people traveled in ancient times.

Imagine standing on a hilltop at dusk, seeing an aura of lightened lines passing through earthworks & stone circles, with darkened groves of trees glowing with soft light.

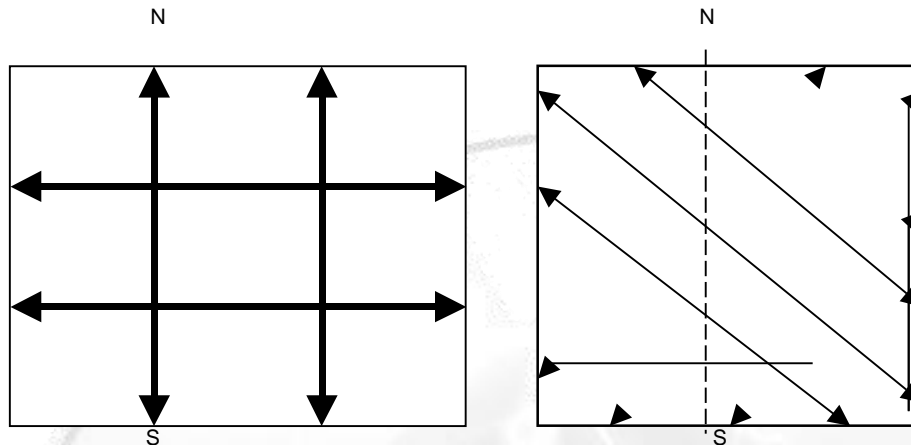
Ley-lines & light are very closely related. Ley-lines are cosmic forces originating inside the Earth. Ley-lines come from a point several hundred feet below the surface of the Earth; they leave the Earth vertically. There are also vortexes, which are often called power centers, not normally found on Ley-lines.

Ley-lines travel in perfectly straight lines (seen from a 'birds-eye view'), always maintaining the same depth relative to the surface of the Earth & crisscrossing each other over the whole planet.

## LEY LINES continued



The widths of the lines vary. The larger ones are  $1\frac{3}{4}$  mtr ( $5\frac{1}{2}$ ft) wide (the width of the Roman roads) & are approximately  $5\frac{3}{4}$  klm (3 miles) apart. The smaller "Hartman lines" run north/south & are  $7\frac{1}{2}$ cm (8") wide & about  $1\frac{3}{4}$ mtr (6'ft) apart. The "Curry lines" run northeast/southwest & are narrower, carrying a lot less energy than the Hartman lines.

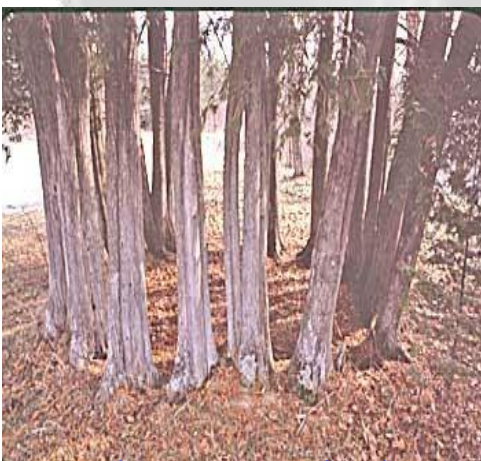


**Hartman lines** are named after a German medical doctor **Ernst Hartman**.

In 1950 **Ernst Hartman** pioneered the field of **Geobiology** (the study of how the earth affects your health). In Germany, 'Geobiologists' visit patients' houses - they are there to check the house & ground where the patient lives!

These 'Geobiologists' will give the patient recommendations as to where in the bedroom to place their bed. Although this doesn't sound very scientific, **Dr. Hartmann** has over 40 years of extensive medical documentation to back up his claims & has published three highly technical books on the study of Geopathic Stress.

Similarly there are Earth **vortexes** (energy coming from the Earth in a spiral). **Vortexes** appear to be points of energy on the Earth, occasionally these points may be on a Ley-line but not often. An analogy might be that **Ley-lines are the Earths' meridian system** & **vortexes are similar to chakras** except the energy is spiraling out not in. Ley-lines will sometimes cause health problems; **vortexes** will contribute to health issues if people sleep over them.



In northern Queensland a young couple slept over a vortex during their pregnancy.

Their baby was born with the umbilical cord rapped around his neck 7 times there has only been 3 cases like this known of in the world.

## LEY LINES continued



When a Ley-line passes through decaying matter, radiation, or a polluted river it can pick up negative energies. This becomes what some Geomancers call a 'black stream' (even though its not a stream). Someone living or sleeping over these can become ill or emotionally disturbed by these influences; many practitioners believe that it often causes cancer.

On a farm in Ballarat Victoria, plants died in a 19cm (8") section across all the rows. This was over a Ley-line that had been affected by the French nuclear tests at Muraroa-Atoll the previous week.

### What Do Ley Lines Feel Like?

A vertical field extends up from the Ley-line through homes & buildings. The nature of this field is yang or energetic. This can be an advantage in some situations where extra energy is useful. But a person who sleeps over a Ley-line for an extended time could tend to be hyperactive or if the Ley-line is negative, the energy will manifest in tension, anxiety, neurosis or worse.

Here are some comments from people talking about what standing over a Ley line feels like to them:

- "Energising, white/fuzziness."
- "See a glowing line going in the direction of the flow."
- "Faint cool energy."



The worst place you could possibly sleep or work is where two Ley- lines cross. The energy from these lines can penetrate everything. If you live on the top floor of an apartment building, the rays will cut through the different floors & still affect you.

These Ley-lines are more intense in the early morning between 1 & 4am, people who sleep over these lines tend to wake from their sleep at these times.

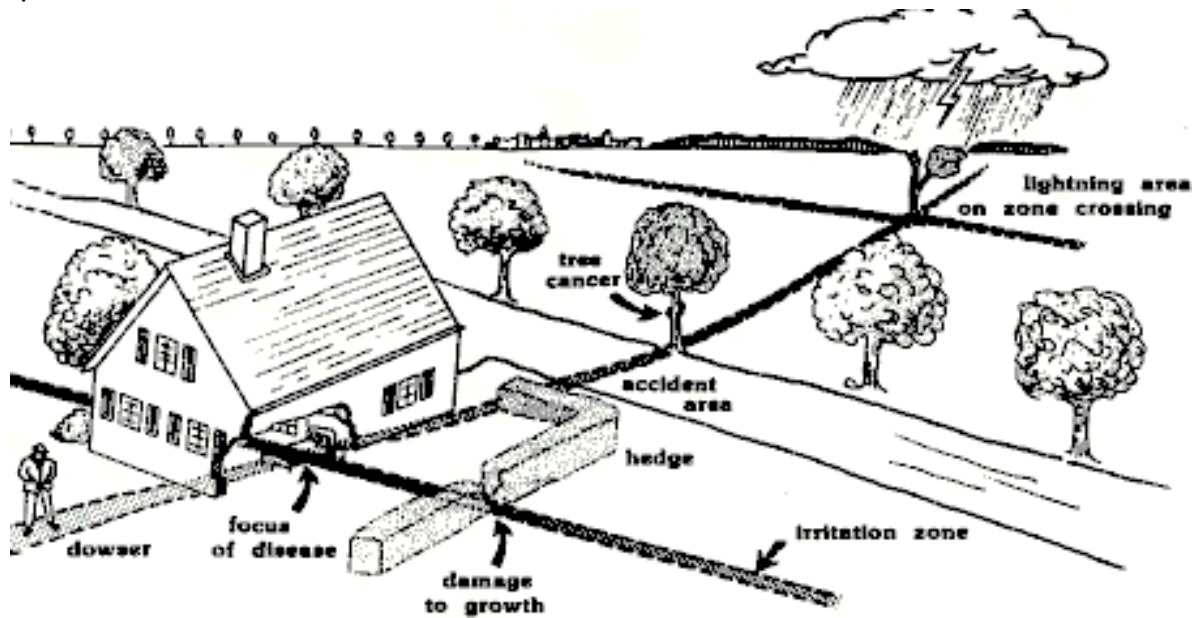
**"Once I went to a man's home & warned him NOT to sleep in a certain spot. He thought I was a fool. Twelve years later, he died of cancer." ---Ernst Hartmann, M. D.**



## LEY LINES continued

### **"If your cat loves your bed - MOVE your bed!"**

A woman in Germany had three cats. They all slept on one spot on the bed when she wasn't there. She also slept on this same spot. It was around her chest area, - she died of breast cancer!



In 1929, German Central Committee for Cancer Research in Berlin checked hospital records. It was found that all 54 patients, who had died of cancer since records had been kept, had slept in beds above Hartman Ley-line intersections.

In the 1970's, Kathe Bachler, an Austrian schoolteacher, started one of the most extensive & recent research projects. She dowsed 3,000 apartments in 14 countries & interviewed 11,000 people. Her conclusions were that 95% of the children with ADD or other health problems that she had investigated slept in beds or worked at desks placed at crossed Ley-lines. She also checked a sample of 500 cancer cases; every one was found to be sleeping over crossed Ley-lines.

## Signs of Geopathic Stress

- ❑ Trees whose branches bow down to the ground (underground water).
- ❑ Unhealthy or strangely twisted, gnarled trees (Ley-lines, radiation).
- ❑ Signs of lightning struck trees (Underground water).
- ❑ Dead or stunted gaps in hedges (Ley-lines, underground water, radiation).
- ❑ Infertile fruit trees (EMR, underground water, Ley-line).
- ❑ Lawns often have bare patches, moss, silver weed or fungi (UW, LI,).
- ❑ Vegetable gardens with stunted or mutated growth (UW, EMR, rad).



Mammals instinctively avoid spending time over Geopathic Stress. It's believed birds are the most sensitive, while horses are a

little more resilient. Insects, parasites, bacteria, viruses, ant & wasp nests thrive in Geopathically Stressed area. Sighting any of the above symptoms usually provides a clue to Geopathic Stresses.

A gnarled or twisted tree's usually grow over intersecting Ley-lines. The tree will twist as it grows in an attempt to grow away from the stress on all sides.

Fruit trees are the most sensitive, but Oaks, Redwoods & Ashes are more resilient.



High accident locations on highways have also been correlated with Geopathic Stress activity.

# Finding Geopathic Stress

## Dowsing or Scientific Measurements?



Occasionally you will hear of individuals like Venceslav Palnovsky of Prague, who discovered that subterranean water streams could be measured by the fading of ultra shortwave transmissions on a radio.

Professor Herbert Konig of Munich found a person's blood sedimentation rate changes when they sleep or stay in a Geopathically stressed area, leading eventually to heart disorders.

In Switzerland, Dr. Joseph A. Kopp claimed that scientifically measurable effects occur, such as an increase in electrical conductivity of the soil & air. An increase in UHF waves & an intensity of infrared radiation has also been found above underground water. He also found that mice placed in wooden cages above underground water had a variety of symptoms: restlessness, biting each other & eating their young.



Recently, the electro-chemical potential directly above underground water has also been scientifically measured. Oscilloscopes have been used to verify the discoveries of researchers in France.

Despite all the studies, there has been no firm 'scientific' evidence that has been able to disprove Dowsing. Nor has there been any scientific research that can replace the work of earth Dowzers.



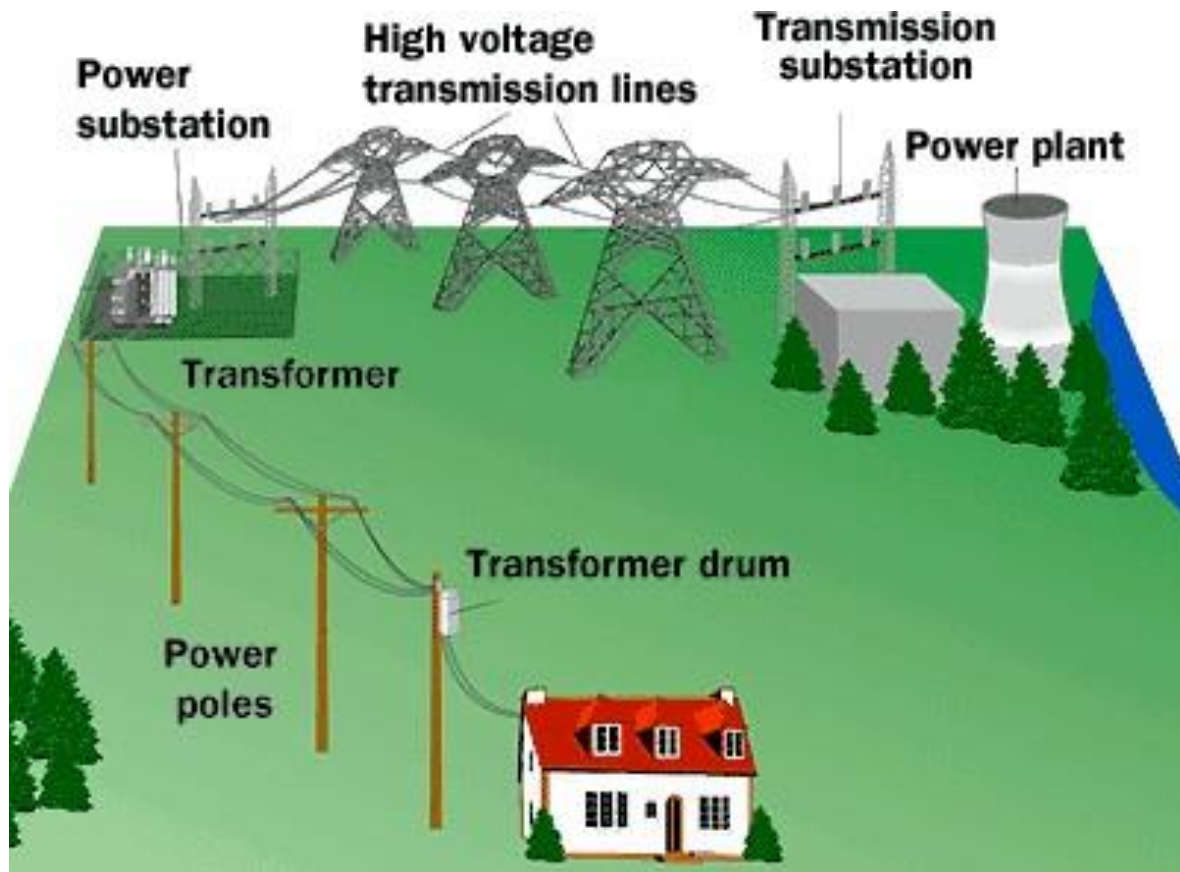
The Police, NASA & the armed forces regularly use Dowzers.

# Checklist for testing **GEOPATHIC STRESS**



Before arriving at your client's premises look around.  
Dowse to see if there is a GS problem.

## First Look Around to Check the Electromagnetic Environment



Take notice driving up to the house  
look to see if the power lines in the street  
have one or two levels of power lines.

When there's more than one level of power line  
the upper level of wires are always  
high-tension power.

Most people living in a street with 2 or more levels  
of power lines are unaware that they have high-  
tension power lines outside their house.



Checklist for testing GEOPATHIC STRESS continued  
**LEVELS of POWER in the LINE**  
Look up at the street power-lines



240 Volts



22,000 Volts



High-tension power lines, 100,000+ Volts



Transformers on poles.



Transformers for underground power.

## Check list for testing GEOPATHIC STRESS continued Sub Stations



As you arrive in an area check for Substations, at night they run excess electricity into the ground & these high levels of EMFs will affect people living upto 3 & 4 streets away

## Phone Towers



Mobile phone towers as seen on many buildings



Mobile phone repeaters just a bit stronger than the normal towers



Look carefully, these are Mobile phone towers in disguise they are everywhere.

Checklist for testing GEOPATHIC STRESS continued

## Notice the trees.

Are any showing signs of underground water?



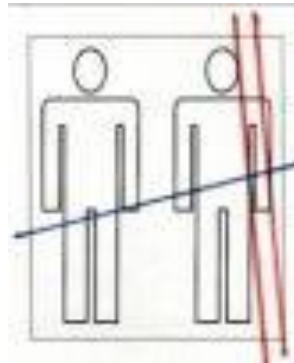
Remember trees show underground water when their branches bow down to the ground as pictured here.



## Check the plants & trees for Ley-lines



These trees are showing signs of bad energy Ley-lines. The tree on the right has a cancer growth. The tree on the left has grown on crossed Ley-lines & has tried to grow out of it.



A major problem in regards to health is: Underground water or Ley-lines, under the bed. Always check the bedroom.



If you find a problem that does not test up as a **Ley-line** check, it could be a **Vortex** which as you know can be quite nasty **Especially when it's in the bedroom.**